



BestCare®

By Whitehall Manufacturing®



**Ligature-Resistant Plumbing
Products & Accessories**



PEACE OF MIND • SAFETY • STYLE

BestCare®

LIGATURE-RESISTANT
PLUMBING PRODUCTS & ACCESSORIES



Dual Occupancy Room Design



**75% of inpatient
suicides occur in the
patient's bathroom,
bedroom, or closet⁵**

HELPING IN THE PROCESS OF WHOLE HEALTH

WHOLE HEALTH:

HEALTH IS A STATE OF PHYSICAL,
MENTAL AND SOCIAL WELL-BEING AND
NOT MERELY THE ABSENCE OF DISEASE.

MENTAL HEALTH AFFECTS OF COVID-19:

- 67% higher levels of stress since outbreak of COVID-19
 - 54% are more emotionally exhausted
- 42% report their overall mental health has declined¹²

In 2017, The National Institute of Mental Health estimated 46.6 million US adults aged 18 or older suffer from a form of mental illness.

The suicide rate in the U.S. has been rising for two decades, and in 2018 hit its highest level since 1941¹³

2000

2007

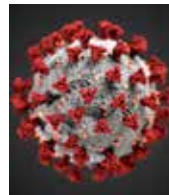
2017

2020

In today's world, there is an increased focus on mental health & well-being. COVID-19 has led to many issues such as isolation, unemployment, disrupted routines, stress and anxiety which have all contributed to the mental health issues affecting the entire world. The importance of the patient experience, their healing process and safety are key factors in healthcare / behavioral healthcare facility design.

A worldwide mental health crisis is growing across all demographics that are now suffering from mental health issues.

PTSD has risen due to factors such as stress, isolation and COVID-19. The increase of healthcare workers having issues is growing. Substance abuse is on the rise in teens, elderly and veterans. Healthcare workers treat a flood of critically ill patients during pandemics. They risk their own health.



BestCare®

LIGATURE-RESISTANT PLUMBING PRODUCTS & ACCESSORIES



TABLE OF CONTENTS

BEHAVIORAL HEALTHCARE EXPLAINED	10
UNIVERSAL DESIGN	14
INFECTION PREVENTION	16
RESTROOM DESIGN	18
WHERE ARE THE LIGATURE POINTS	22
DIGNITY SUITE	24
STANDARD SUITE	26
MATERIAL INFORMATION	76



START WITH THE FIXTURES SECTION 22 PLUMBING



TABLE OF CONTENTS

SINKS

STAINLESS STEEL
SOLID SURFACE
CORNER SOLID SURFACE
BARIATRIC

28

FAUCETS

SENSOR, DUAL & SINGLE TEMP
PIEZO, DUAL & SINGLE TEMP
MANUAL, DUAL & SINGLE TEMP
WIDESPREAD & RETROFITTABLE
VALVES

34

TOILETS & URINALS

COMMERCIAL TOILETS, TOP & WALL SUPPLY
TANK STYLE TOILETS
REPLACEMENT
BARIATRIC
URINALS

42

TOILET ACCESSORIES

SENSOR OPERATED FLUSH VALVE ACTIVATION
FLUSH VALVE COVERS
TOILET SEATS
ACCESS DOORS

46

ELECTRONIC WATER MANAGEMENT SYSTEMS

50

SHOWER SOLUTIONS

RECESSED
SURFACE MOUNTED
HANDHELD
SHOWERHEADS & TUB SPOUTS
VALVES
DIVERTERS

52

SHOWER BASES W/ INTEGRAL TRENCH DRAINS

56

DRAINS

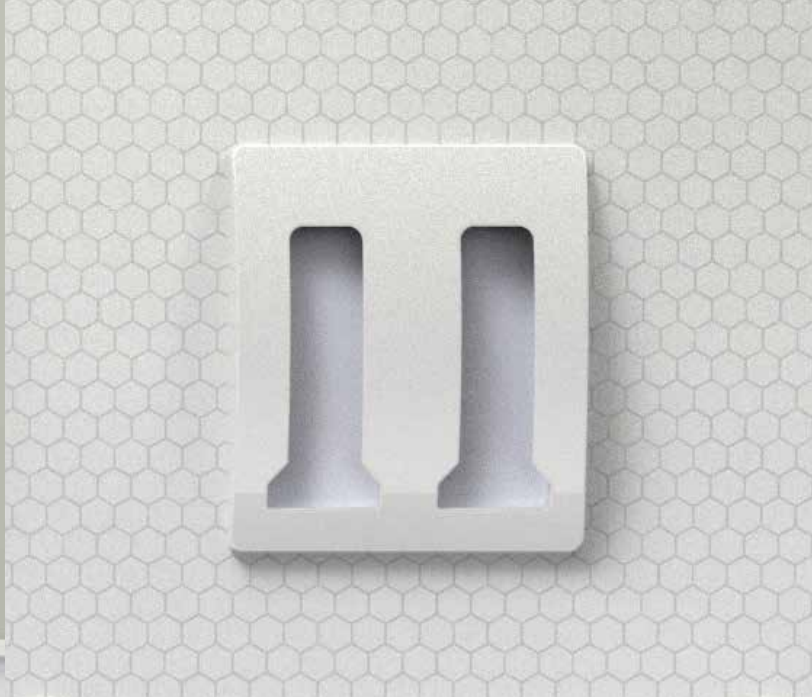
LINEAR
FLOOR, CIRCULAR
FLOOR, SQUARE
DRAIN GRATE
VINYL FLOOR

58

BOTTLE & CUP FILLERS

SENSOR
PUSH BUTTON

62



COMPLETE YOUR PROJECT DIVISION 10

IN-STOCK
(EXCEPT CUSTOM)



TABLE OF CONTENTS

ACCESSORIES

MIRRORS

STAINLESS STEEL

SOLID SURFACE

CUSTOM SIZES

TOILET PAPER HOLDERS

PAPER TOWEL HOLDERS

TOWEL & CLOTHING HOOKS

SHELVES

RECESSED

SURFACE MOUNTED

VANITY

SHOWER CADDY

SOAP DISHES

GRAB BARS

64

CABINETS & ENCLOSURES

ACCESS DOORS

FIRE EXTINGUISHER CABINETS

RECESSED

SEMI-RECESSED

SURFACE MOUNTED

70

ABOUT THE WATER OTHER PRODUCTS



ACORNVAC® VACUUM PLUMBING SYSTEMS

74

CONTROLS® WATER REGULATING PRODUCTS

75

A close-up, high-contrast photograph of two hands shaking. The hands are positioned diagonally across the frame, with the fingers interlaced in a firm grip. The skin tones are natural, and the lighting highlights the texture of the skin and the veins on the hands. The background is a plain, light-colored surface.

WORKING TOGETHER
TO PROTECT THE PATIENT,
HEALTHCARE WORKER & FACILITY

BEHAVIORAL HEALTHCARE



Behavioral Healthcare is a term that is often used interchangeably with mental health, encompassing treatment of all psychiatric illnesses and/or substance abuse.

Today, it is inclusive of all mental health issues, affecting all walks of life. The treatment and environment is moving towards new solutions for future needs and growth. Everyone working together for the safety of the patient, healthcare worker and facility.

Suicide and Crisis Lifeline Call or Text: 988

Launched on July 16th, 2022, the Suicide & Crisis Lifeline is a Nationwide Mental Health Crisis number to change how the US approaches suicide prevention.¹⁵

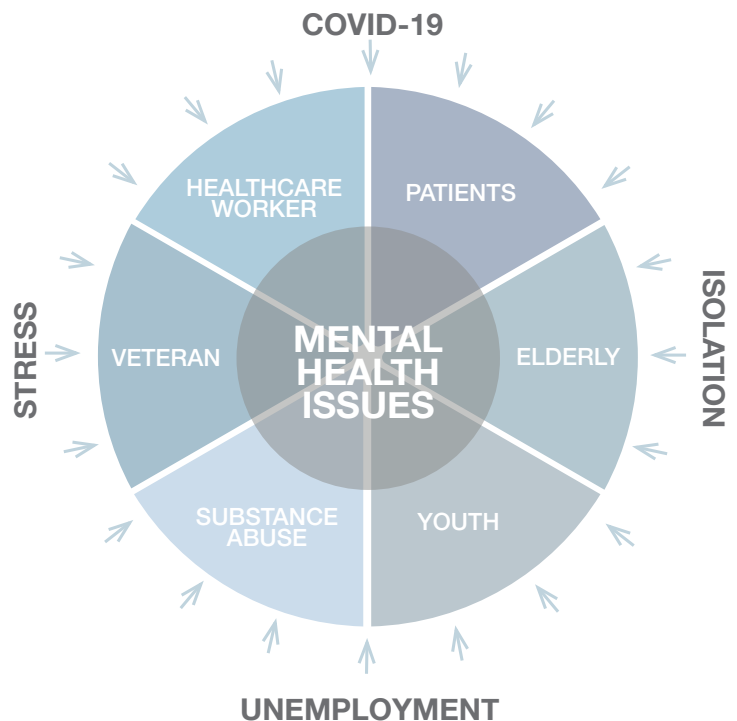


YOUNG
OLD
STRONG
WEAK
INPATIENT
HEALTHCARE
WORKER
TEACHER
STUDENT
VETERAN
SUBSTANCE
ABUSE

MENTAL HEALTH AFFECTS ALL

In the United States, mental health treatment topped a list of costly medical conditions in 2013, at \$201 Billion

— American Journal of Psychiatry



The psychological and behavioral impacts of a disaster are experienced by more people, over a larger geographical area, and for far longer than all other medical effects combined.¹⁴



Veterans accounted for 20.2% of suicides among U.S. adults.⁷



"As America confronts a health care landscape deeply – and likely permanently – altered by the COVID-19 pandemic, behavioral health care access has emerged as both a challenge and opportunity. The pandemic exacerbated the need for behavioral health services while individuals with existing disorders faced additional barriers to care."¹⁶

US VETERAN MENTAL HEALTH STATS:
Of the on average 16.8 Veteran suicides per day in 2020, approximately 39.7% (6.7 per day) were among Recent Veteran VHA Users and 60.3% (10.1 per day) were among Other Veterans.¹⁰



More than 6,000 Veteran suicides each year from 2002-2019.⁷

UNIVERSAL DESIGN

IMPROVING

INSTILL CALMNESS

HELP THE
HEALING PROCESS

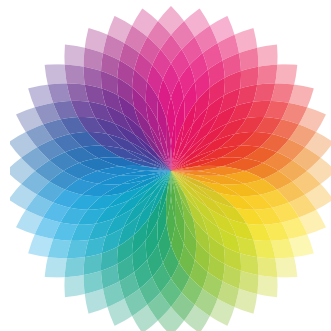
CREATE BALANCE

"When treatment facilities are referred to as institutions, it makes people think that seeking help is scary and prison-like. But when they are designed thoughtfully, they are places of hope and feeling and transformation."

— Alison Leonard, AIA EDAC,
Cannon Design

A universally designed environment instills **calming aesthetics**, which help with the patient's well being and healing process.

Today's behavioral healthcare facilities are taking a special interest in designing a therapeutic healing environment. Color, space, light and shapes, all have affects on the patient.



LIGHT
SHAPE
COLOR
SPACE
TEXTURE
MATERIAL

Using healing colors for a room can significantly change a patient's mood and bring about many mind and body benefits.

"We like to picture everyone having access to the outdoors and lots of natural light that comes with one-story buildings. It's a nicer environment than a six-story tower. Those towers can be very intimidating, and perception is important for a patient entering the facility,"

Article: Mark L. Spies: Designing for Behavioral Health –It's Not Just a Job

STYLE
SAFETY
EASE OF USE
WHOLE HEALTH



THE PATIENT EXPERIENCE



The color most beneficial in making people feel calm and relaxed is **BLUE**.

GREEN is one of various colors that can be beneficial to reduce anxiety and bring about a calmer state of mind.



BestCare® ligature-resistant plumbing products are designed to create balance between style, safety and patient well being. The product is **easy to use with clean and sleek lines**.

INFECTION PREVENTION



HAND WASHING is one of the most powerful tools in the fight against the spread of infection.

HANDS-FREE OFFSET DRAIN SOLID SURFACE STERITOUCH®

Infection Control has become an important focus in design of healthcare / behavioral healthcare facilities. BestCare® products integrate infection prevention with hands-free product, solid surface material, SteriTouch®, and CuVerro®, all of which help in the fight against the spread of infection.



HANDS-FREE OPERATION
Ligature-resistant sensor activated faucet



OFFSET DRAIN
Prevents water from being dispensed directly into the drain, preventing bacteria in the drain from aerosolizing and entering the sink basin via splashing

Definition of Healthcare Associated Infections (HAIs):
Infections that develop in the hospital environment that a patient did not arrive with.

- 1.7 million estimated hospital-acquired infections, resulting in approximately 98,000 deaths each year
- 5th leading cause of death nationally
- Cost \$28 to \$45 billion annually in the U.S. according to the CDC (The Centers for Disease Control and Prevention)¹¹



WATCH our video demo on sensor operated faucets

<https://bit.ly/30bJnI4>

MATERIAL & ANTIMICROBIAL ALTERNATIVES

CORTERRA® COLORS

-  1. Blanco (Gloss)
-  2. Blanco (Matte)
-  3. Cotton Tail
-  4. Parchment
-  5. Meteorite
-  6. Moonstone Metallic
-  7. Pacific Palisades
-  8. Del Mar
-  9. Saguaro

CORTERRA® SOLID SURFACE

- Corterra® is a revolutionary solid surface polymer made from recycled material
- Corterra solid surface sinks feature seamless design, eliminating crevices where bacteria and mold often form
- Class A Fire Rated

ADD TO
SOLID
SURFACE

SteriTouch®
ANTIMICROBIAL PROTECTION

Add SteriTouch® to any solid surface Corterra® sink and reduce the growth of harmful bacteria and mold.

ADD TO
STAINLESS
STEEL

SURESHIELD
COATINGS COMPANY

Contains antimicrobial protection to inhibit the growth of odor and stain-causing bacteria, molds, mildews, and fungi on the treated surface. Add to stainless steel.

DESIGNING A SAFE AND PLEASANT BATHROOM

BALANCE BETWEEN RISK, TIME & DESIGN

Today's healthcare facilities have growing and changing needs. In the design and construction process, schedules need to be met and budgets and guidelines must be followed, while in some cases continuing to treat patients.

In both new construction and retrofit projects, important features to consider are ease of use, maintenance, design and durability of product.



STAY IN BUDGET
EASY-TO-INSTALL
MEET YOUR SCHEDULE



BestCare® products are **designed** for both new construction and retrofit projects, allowing for existing healthcare facility alterations without the mess. While traditional new construction and retrofit projects may take weeks, even months to complete, our budget conscious and easy-to-install BestCare® products cut installation time and help stay within your budget.

"You're making lives different through your designs. You're improving the quality of care and you're improving the quality of the environment. I've had a career-long aspiration to make a difference in the built environment for the people that use and live in it every day."

— Kimberly McMurray
Behavioral Health Facility Consulting
(BHFC)

EXAMPLE PROJECT LIST:

- Cincinnati Children's Hospital-College Hill, Cincinnati, OH
- Boston Medical Center Behavioral Health, Brockton, MA
- Southcoast Behavioral Health, Dartmouth, MA
- Cambridge Health Alliance, Somerville, MA
- Children's Hospital of Philadelphia, Philadelphia, PA
- St. Joseph's Hospital Behavioral Health, Tampa, FL
- Acadia Hospital, Bangor, ME
- Sheppard Pratt Bayside, Elkridge, MD
- University of Washington Behavioral Health Teaching Hospital, Seattle, WA
- Center for Behavioral Medicine, Knoxville, TN
- River Park Hospital, Huntington, WV
- Dowell Springs Behavioral Health, Knoxville, TN
- VAMC, Murfreesboro, TN
- Cumberland Ascension Health, Nashville, TN
- Vanderbilt University Behavioral Health, Nashville, TN
- Austin State Hospital-Austin, TX
- Rusk State Hospital -Rusk, TX

**No disruptions on retrofit,
there is a savings on budget,
time and the convenience of
a facility's continued use.**



"Without empathy and connection, we end up where we are today. People struggling with their mental and behavioral health also face a lack of opportunity and support in their community and often lack access to care."

"There is no one-size-fits-all solution. The design must fit each facility's program. The building must be designed for the unique needs of the community. It must be designed for connection—be that between caregiver and patient, patient to patient, and family to patient and caregiver,"

Article: Nathan Howell:
Behavioral Healthcare Design
for Resiliency & Connection

- San Antonio State Hospital -San Antonio, TX
- Caro Hospital-Caro, MI
- Lincoln Regional -Omaha, NE
- Pinecrest Psychiatric Hospital, Pineville, LA
- Texas Health Resources -Fort Worth, TX
- Memorial Hermann Katy -Katy, TX
- NPH Behavioral Hospital -Greenwood, IN
- Madison State Hospital -Madison, IN
- Bronson Behavioral -Battle Creek, MI
- Maple Heights Behavioral -Indianapolis, IN
- Robert M Greer Hospital -OK
- Little Colorado Behavioral Health -CO
- Summa Behavioral Health, Akron, OH
- University Health, Cleveland, OH
- MetroHealth, Cleveland, OH
- Sarasota Regional Hospital, Sarasota, FL
- Baptist Medical Center, Jacksonville, FL
- Jackson Memorial Hospital, Miami, FL
- Capital Regional Medical Center, Tallahassee, FL
- Sharp Grossmont Hospital-La Mesa, CA
- Kaiser Permanente Downey Medical Center-Downey, CA
- Cedar Sinai Medical Ctr-Los Angeles, CA
- Hawaii State Hospital-Kaneohe, HI
- Banner University Medical Ctr-Tucson, AZ
- Langley Porter Psychiatric Institute-San Francisco, CA
- Gateways Hospital & Mental Health Ctr-Los Angeles, CA
- Tala Harbor at Yuma LLC-Yuma, AZ
- Valleywise Health Medical Ctr-Phoenix, AZ
- Northern Arizona Regional Behavioral Health Authority-Flagstaff, AZ
- Stanford Medical Center-Palo Alto, CA
- Purpose Healing Center, Phoenix, AZ
- Mayo Clinic, Phoenix, AZ • Mind 24/7-Las Vegas, NV
- VA Long Beach Health Care-Long Beach, CA
- Arrowhead Regional Medical Center-Colton, CA
- LAC-USC Medical Center-Los Angeles, CA
- Olive View UCLA Medical Center-Sylmar, CA
- UC Davis Medical Center, Kindred Healthcare and PMB-Sacramento, CA

OUR PRODUCT CAN
WORK WITH EXISTING
WALLS AND MATCH
ROUGH INS

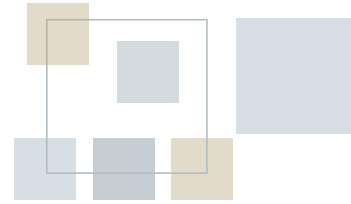
FLEXIBILITY

Today's healthcare facility design must be flexible and adaptable in order to meet the demands and challenges of unknown crises such as COVID-19. Now with the need to social distance, infection control and protection of the healthcare worker as well as patients, new solutions are needed in the physical environment.



WORKING IN A CRISES

The design of a healthcare facility is exploring many options from single rooms, campstyle environments, flow of movement and other modular solutions. BestCare® ligature-resistant plumbing fixtures and products are great solutions.



A healthcare facility needs to be flexible and adapt to change in today's environment. Shifts in space, safety, size, and capacity all are factors.

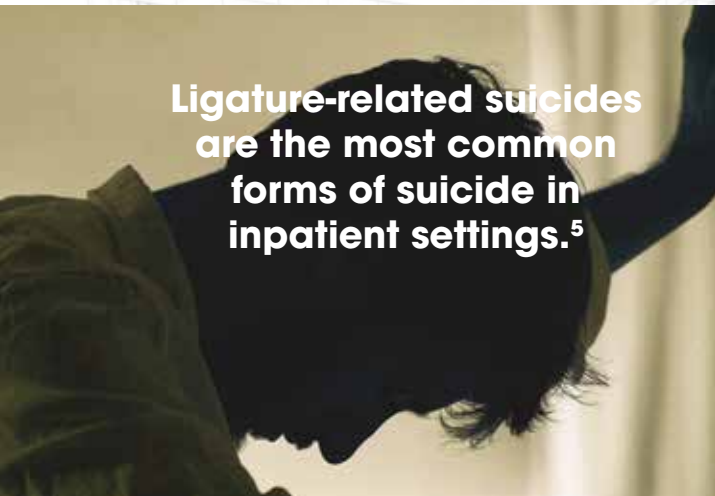


Pushbutton bottle filler, see page 63 for more information.

ADAPT

"Whitehall has always taken constructive criticism to heart and paid attention to what we were saying. As a result of that, they have designed great products. The focus groups you are putting together to develop new products are important; kudos to you for putting the time and effort into that."

— Alison Leonard, AIA EDAC, Cannon Design



Ligature-related suicides are the most common forms of suicide in inpatient settings.⁵

**“The Built Environment can contribute to reducing errors, fall, infections and suicide attempts”
- Joint Commission**

There are many guidelines set into place that dictate what is necessary in a healthcare/behavioral healthcare environment. Compliance can make the difference in funding, costs and timeline. BestCare® products meet these standards with plumbing fixtures for Section 22 and can supply accessories for Division 10.

COMPLIANCE

LATEST JOINT COMMISSION STATISTICS

The environment of care is made up of **THREE BASIC ELEMENTS:**

- 1. THE BUILDING OR SPACE**, including how it is arranged and special features that protect individuals served, visitors, and staff.
- 2. EQUIPMENT** used to support care, treatment, or services or to safely operate the building or space.
- 3. PEOPLE**, including those who work within the organization, individuals served, and anyone else who enters the environment, all of whom have a role in minimizing risks. Risks are inherent in the environment because of the types of care provided and the equipment and materials that are necessary to provide that care. The best way to manage these risks is through a systematic approach that involves the proactive evaluation of the harm that could occur. By identifying one or more individuals to coordinate and manage risk assessment and reduction activities - and to intervene when conditions immediately threaten life and health - organizations can be more confident that they have minimized the potential for harm. Risks in the environment include safety and security for people, the handling of hazardous materials, the potential for fire, and utility systems.

THE JOINT COMMISSION

is an independent, not for profit organization. It sets the standards and establishes elements of performance for over 21,000 healthcare organizations/programs in the United States based on the **CMS standards**.

CMS — CENTER FOR MEDICARE AND MEDICAID

Hospitals must meet eligibility standards established by the federal government in order to receive reimbursement from the federally funded programs, Medicare and/or Medicaid.

CMS has been designated as the organization responsible for accreditation of hospitals, deeming them accredited and meeting established standards



RECOGNIZING LIGATURE POINTS AND WHERE YOUR BATHROOM IS AT RISK

UNSAFE SOLUTIONS



In traditional bathroom applications, ligature points are more common than you might realize. The arrows above indicate dangerous ligature points in existing bathrooms, including sinks, toilets, showers, drains, grab bars, faucets, towel hooks and toilet paper dispensers.

As seen on the next page, BestCare® fixtures and accessories ultimately reduce ligature points to ensure a safer and more secure behavioral healthcare environment.



LIGATURE POINT — objects or access points in an environment that can be repurposed for self harm by tying, binding, or wedging a cord, rope, towel or other material.

PROTECT YOUR PATIENTS
WHERE RISK IS A CONCERN.

LIGATURE-RESISTANT PLUMBING FIXTURES & ACCESSORIES

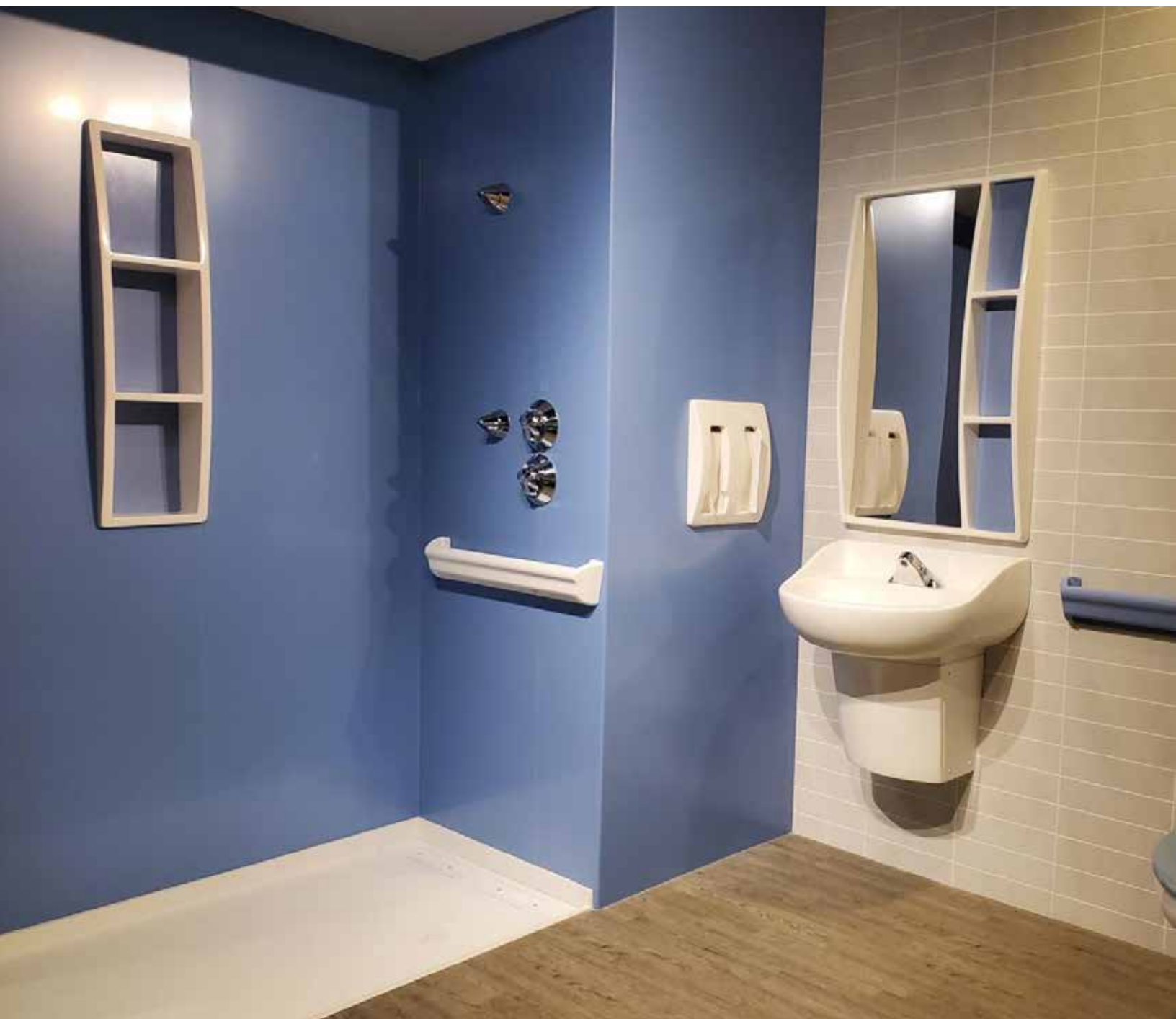
SAFE & STYLISH SOLUTIONS



SAVE A LIFE, BE PROACTIVE
AND SECURE YOUR
FACILITY'S LIGATURE POINTS.

1. Sinks
2. Faucets
3. Ceiling Showers
4. ADA showers
5. Shower Base with Trench Drains
6. Linear Drains
7. Floor Drains
8. Grab Bars
9. Mirrors
10. Shelf/Soap Dish
11. Shelves
12. Toilet Paper Holders
13. Paper Towel Dispensers
14. Hooks
15. Toilets
16. Flush Valve Cover

OUR SUITES - DESIGNED TO WORK AS A WHOLE

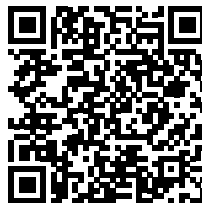


FRESH BALANCE RELAX

DIGNITY SUITE

Our Dignity Suite creates a peaceful, well balanced environment. Designed to work together as a whole, the plumbing fixtures and accessories are stylish with sleek lines for universal use, and ligature-resistant for behavioral healthcare facility needs.

1. Sinks
2. Faucets
3. Toilets
4. Showers with Ceiling Showerhead
5. Shower Bases with Integral Trench Drains
6. Linear Drains
7. Floor Drains
8. Grab Bars
9. Mirrors
10. Shelves
11. Spindle-less Toilet Paper Holders
12. Paper Towel Dispensers
13. Towel/Clothes Hooks



GREAT SOLUTIONS FOR RETROFIT



STANDARD SUITE ONE

EASY INSTALLATION, UNIVERSAL DESIGN AND SAFE!

STANDARD SUITE

Our Standard Suite creates an economical solution to the bathroom as a whole. Clean lines, soft edges, light and shape give this design a fresh look. Created to work together or as individual products, including both plumbing fixtures and accessories. A perfect fit for retrofit projects and a great solution for new construction.



STANDARD SUITE TWO

1. Sinks
2. Faucets
3. Toilets
4. Showers
5. Shower Bases with Integral Trench Drains
6. Linear Drains
7. Floor Drains
8. Grab Bars
9. Mirrors
10. Soap Dishes
11. Shelves
12. Spindle-less Toilet Paper Holders
13. Paper Towel Dispensers
14. Towel/Clothes Hooks



STANDARD SUITE THREE

ADA LIGATURE-RESISTANT SINKS



Seamless solid surface material can aid in the fight against bacteria

Dual temp sensor faucet with Dignity Suite sink



CORNER
DOUBLE
SOLID SURFACE
STAINLESS STEEL
BARIATRIC
VANITY
EXTRA
COUNTER SPACE

Our [Ligature-Resistant Sinks](#) are designed to combine the look and feel of commercial grade designer sinks, while keeping the patient's safety in mind. BestCare® sinks are seamless, featuring an integrated bowl, backsplash, and sidesplash. Available in solid surface or stainless steel for added durability.

Alcove Multi-Unit Basin



- Solid surface seamless material
- Choose from single-, two-, three-, or four-station
- See page 33 for more product details and Corterra solid surface options



DESIGN



- Sleek clean design
- Space saving with extra counter space
- Solid Surface seamless material
- Bariatric when paired with an in-wall carrier



SOLID SURFACE VANITIES



- Solid surface seamless material
- Right and left versions
- Extra counter space
- Stainless steel option available (Corner basin only)



SOLID SURFACE DUAL BASIN



- Multiple sinks available
- Match mirror and sink counter color, see Corterra® solid surface color options



COMPACT SOLID SURFACE BASIN



- Designed for small spaces
- Seamless solid surface construction
- Small shelf stores personal items

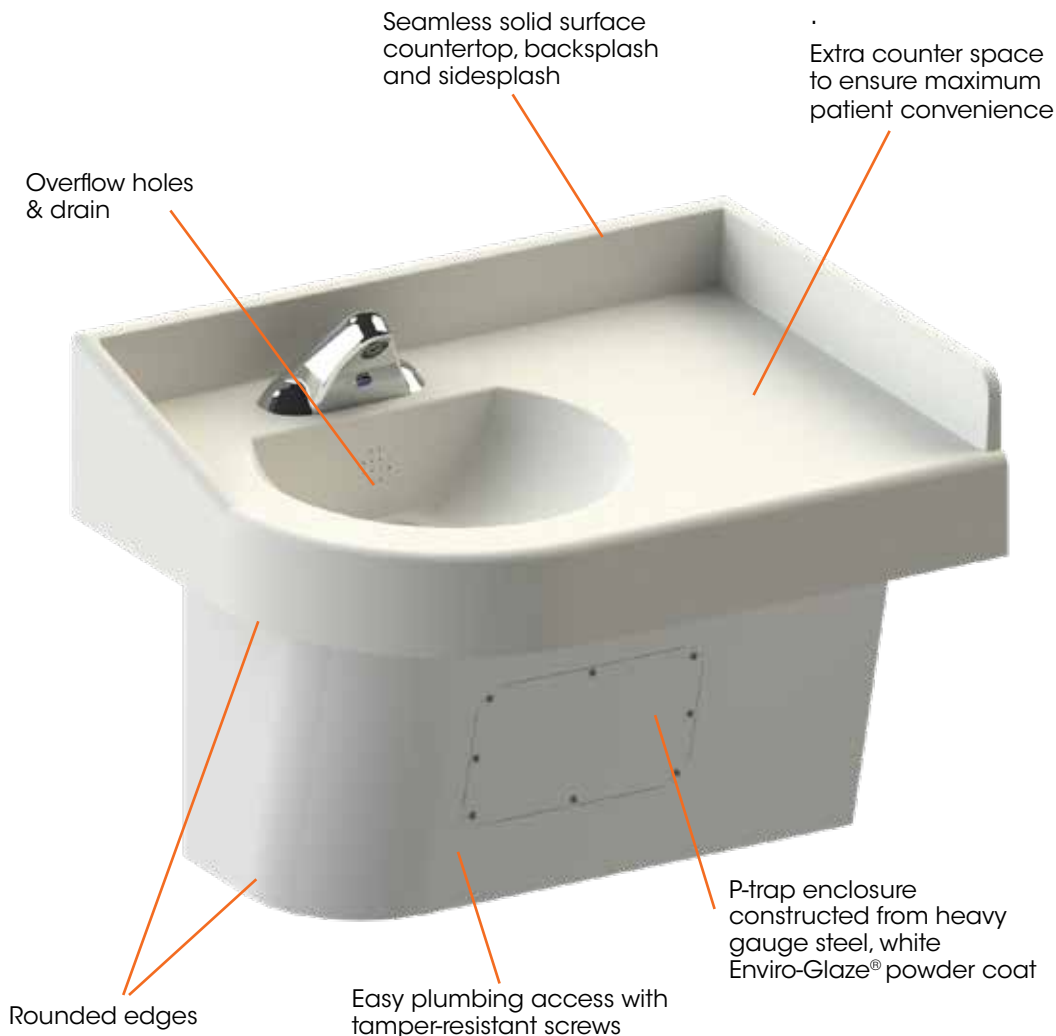
BARIATRIC



- Stainless steel sink
- Bariatric, weight bearing
- In-wall carrier required (sold separately)



ADA LIGATURE-RESISTANT SINKS



- Seamless sink, countertop, backsplash, and sidesplash manufactured from Corterra® solid surface material, with option to add SteriTouch®, which reduces the growth of harmful bacteria and mold
- Standard with an integral "D" shaped sink bowl and rear overflow
- Pair with matching solid surface Corterra® mirror
- For optimal safety, add a BestCare® faucet (sold separately)
- Sink is available in stainless steel, with optional antimicrobial powder coating



Ligature-related suicides are the most common forms of suicide in inpatient settings.⁵

COMPACT SOLID SURFACE SINKS



AFFORDABLE



QUICK INSTALLATION



EASY MAINTENANCE



UNIVERSAL DESIGN

SAFETY

STYLE

WEIGHT BEARING

SPACE SAVING

PATIENT EXPERIENCE



- Designed for small spaces
- Seamless solid surface construction
- Small shelf stores personal items
- New construction or retrofit applications
- Available in all Corterra® colors
- Ligature Resistant
- Not ADA approved

OPTIONS

CORTERRA® SOLID SURFACE COLORS

- Corterra® is a revolutionary solid surface polymer made from recycled material
- Class A Fire Rated

CORTERRA® COLORS

- 1. Blanco (Gloss)
- 2. Blanco (Matte)
- 3. Cotton Tail
- 4. Parchment
- 5. Meteorite
- 6. Moonstone Metallic
- 7. Pacific Palisades
- 8. Del Mar
- 9. Saguaro

POWDER-COAT FINISHES

- Snow White (EG-10)
- Dignity Blue (EG-30)

SteriTouch
ANTIMICROBIAL PROTECTION

Add SteriTouch to any solid surface Corterra® sink and reduce the growth of harmful bacteria and mold.

SteriTouch® and SteriTouch® logo are registered trademarks of SteriTouch Limited

ALCOVE

BestCare®
By Whitehall Manufacturing

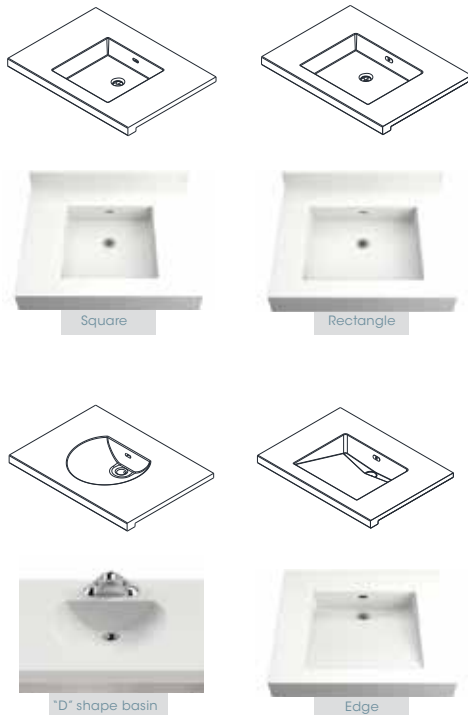


The Alcove basin is a configurable, multi-unit basin designed for alcove installation. The ingenious design of the trap cover offers authorized personnel easy access to plumbing without sacrificing ligature-resistance the rest of the time. It is an ideal choice for behavioral health environments and offers a cohesive aesthetic in various configurations.

- * Perfect for Retrofit Applications
- * Your Choice of Color
(pg. 33 for options)
- * Ligature-Resistant
- * Bariatric Friendly



BOWL SHAPE OPTIONS

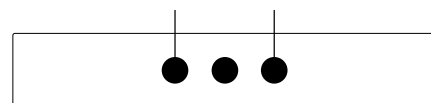


FAUCET LOCATION OPTIONS

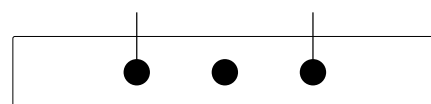
Single Hole



4" Centerset



8" Three Hole Punch



BOWL STATION OPTIONS



Single Station



Two Station



Three Station



Four Station

Stainless-steel shroud option



Single Station



Two Station



Three Station



Four Station

CORTERRA® SOLID SURFACE

Corterra® is a solid surface polymer resin that comes in a variety of attractive color options to match the surrounding décor.

- Pair a sink with a matching solid surface mirror.

CORTERRA® COLORS

- 1. Blanco (Gloss)
- 2. Blanco (Matte)
- 3. Cotton Tail
- 4. Parchment
- 5. Meteorite
- 6. Moonstone Metallic
- 7. Pacific Palisades
- 8. Del Mar
- 9. Saguaro

BESTCARE® LIGATURE-RESISTA

All BestCare® faucets are made of Lead-Free Brass and carefully designed to with patient safety in mind. We offer a variety of faucet options to cater to



SENSOR-OPERATED (HANDS-FREE)



Dual Temperature Sensor Faucet



Single Temperature Sensor Faucet



Widespread Sensor Faucet
(Ideal for Retro-Fit projects)

- Sensor-activation allows for a hands-free experience
- Single & Dual Temperature options available
- Spray nozzle is non-splashing, non-aerated, multi-stream with a 0.5 GPM flow
- Features temperature control changing valve
- Choose from AC/DC plug in transformer or Battery Box option
- Widespread options available

NT FAUCET SELECTION GUIDE

be Ligature-Resistant, ADA compliant & Retro-Fit but most importantly, specific facility and project needs.

PIEZO (ELECTRONIC)



Dual Temperature Piezo Faucet



Single Temperature Piezo Faucet



Widespread Piezo Faucet
(Ideal for Retro-Fit projects)

- Manual-touch Piezo pushbutton activation
- Single & Dual Temperature options available
- Spray nozzle is non-splashing, non-aerated, multi-stream laminar with 0.5 GPM flow
- Features temperature control changing valve
- Choose from AC/DC plug in transformer or Battery Box option
- Widespread options available



PNEUMATIC (DOES NOT REQUIRE ELECTRICITY)



Dual Temperature
Pneumatic Faucet



Single Temperature
Pneumatic Faucet



Widespread Pneumatic Faucet
(Ideal for Retro-Fit projects)

- Manual-touch pushbutton/temperature pneumatic activation
- Single & Dual Temperature options available
- Spray nozzle is non-splashing, non-aerated, multi-stream laminar with 0.5 GPM flow
- Features an air-controlled, pneumatically operated valve (no electricity)
- Widespread options available



LIGATURE-RESISTANT FAUCETS



**Infection hides everywhere, wash
your hands one more time**

Dual temp sensor faucet with Dignity Suite sink



SENSOR
MANUAL
DUAL
TEMPERATURE
SINGLE
TEMPERATURE



BestCare® **ligature-resistant faucets** are specially designed with sloping surfaces and minimally protruding buttons to minimize ligature points.

- The faucets come in either dual temperature or a single temperature configuration, featuring a non-splashing, non-aerated, multi-stream spray nozzle
- Designed with both new construction and retrofit in mind, the faucets come in 4" and 8" centerset and widespread configurations
- All faucets come with valves that allow the facility to time or meter the amount of water that will be delivered to the user when activated. There are two different varieties of valves - pneumatic and electronic (plug in transformer or battery operated)

SENSOR DUAL TEMPERATURE



- Dual sensor gives patient choice of cold or tempered water
- Faucet is factory set to 10 second run time, can be adjusted
- Hands-free helps with infection prevention
- 8" deck plate available for retrofit

SENSOR SINGLE TEMPERATURE



- Hands-free helps with infection prevention
- Faucet is factory set to 20 second run time, can be adjusted
- 8" deck plate available for retrofit

PIEZO DUAL & SINGLE TEMPERATURE



- Piezo button/dual temperature
- Easy touch "on"
- Faucet is factory set to 10 second run time, can be adjusted
- Available in AC plug or battery operated
- 8" deck plate available for retrofit

MANUAL DUAL & SINGLE TEMPERATURE



- Pushbutton/temperature pneumatic operation
- Factory pre-set run time, can be adjusted
- 4" and 8" centerset available

WIDESPREAD & RETROFITTABLE



- Single temp sensor activated wide-spread electronic valve
- Single tempered or dual, cold & tempered
- Hemispherical pushbutton, pneumatic valves or piezo touch-buttons,
- Widespread retrofit or new construction

VALVES



- Thermostatic tempering valve that protects against dangerously hot water in any commercial sink

CONTROLS **INSIDE**

LIGATURE-RESISTANT FAUCETS



DUAL TEMPERATURE



SINGLE TEMPERATURE



The BestCare® sensor activated single temperature faucet will allow water to flow until hands are removed from sensor range.

- Low flow 0.5 GPM
- Heavy duty chrome plated solid brass
- Non-Aerated spray nozzle
- 4" centerset



WATCH our video demo on sensor operated faucets

<https://bit.ly/30bJnI4>



ADA COMPLIANT



AFFORDABLE



QUICK INSTALLATION



LEAD FREE

SENSOR

MANUAL

DUAL TEMP

SINGLE TEMP

WIDESPREAD

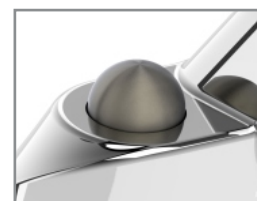
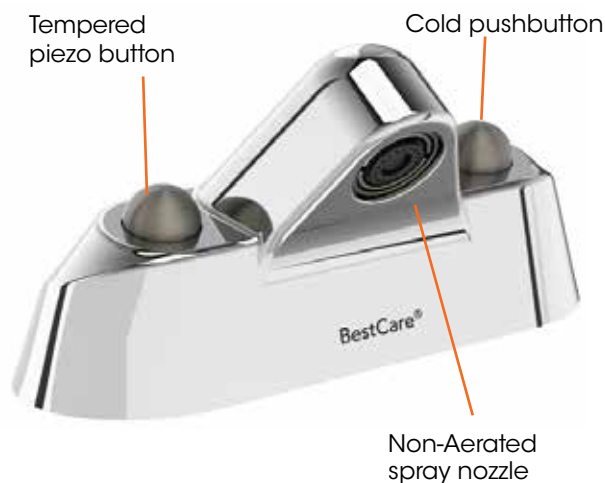
RETROFIT

NEW CONSTRUCTION

MANUAL FAUCETS

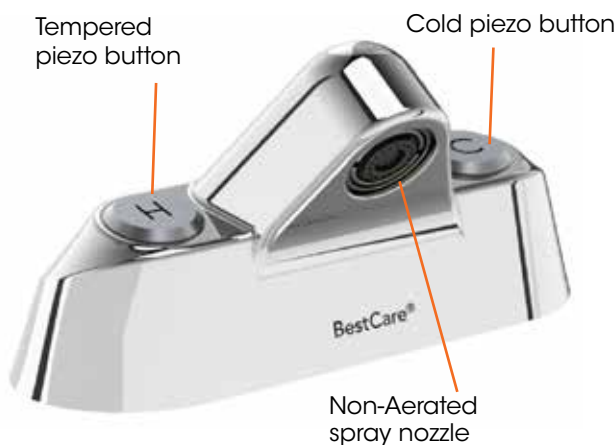
PUSHBUTTON

DOES NOT REQUIRE ELECTRICITY



PUSHBUTTON

PIEZO BUTTON

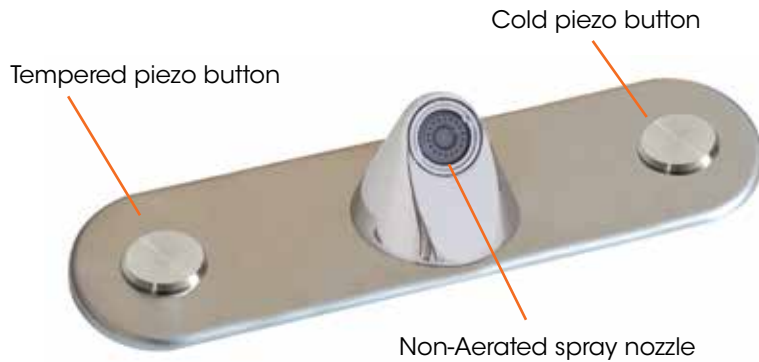


PIEZO BUTTON

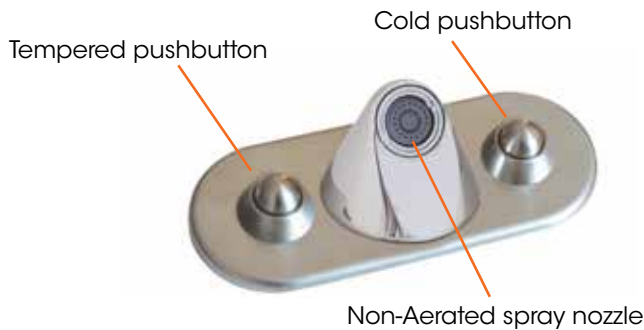
- Heavy duty chrome plated solid brass
- Low flow
- Faucet is factory set to 10 second run time, can be adjusted

LIGATURE-RESISTANT FAUCETS

PUSHBUTTON AND PIEZO MANUAL WITH PLATES



- Single temperature or dual temperature
- Hemispherical pushbutton with pneumatic valves or piezo touch-buttons with electronic valves
- Neoperl® spray nozzle for easy replacement



DOES NOT REQUIRE
ELECTRICITY



HIGH RISK FAUCET

Traditional gooseneck faucets are a primary ligature point for many in-patient suicide attempts.





ADA COMPLIANT



AFFORDABLE



QUICK INSTALLATION

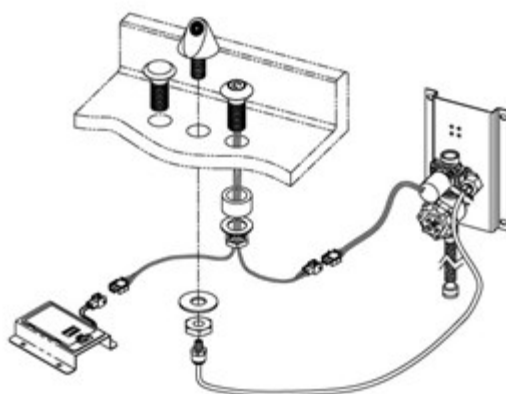


LEAD FREE

WIDESPREAD & RETROFITTABLE



The widespread faucet is designed and developed to retrofit existing lavatories, or it can be specified for new construction. Designed to be mounted on the deck of the lavatory.



- Single temperature or dual temperature
- Hemispherical pushbutton with pneumatic valves or piezo touch-buttons with electronic valves
- Single temp sensor activated widespread electronic valve

GREAT FOR
RETROFIT



LIGATURE-RESISTANT TOILETS & URINALS



Tank-style toilet, shown with access panel and recessed toilet paper dispenser

DURABLE
GREAT FOR RETROFIT
DESIGNED FOR
THE PATIENT

The BestCare® stainless steel toilet is designed to be wider behind the bowl, reducing potential ligature points. Made of heavy 16 gauge stainless steel with white Enviro-Glaze® powder coat and available with floor and wall waste outlet. Toilets can be modified to retrofit existing wall hung toilets with carriers and can satisfy bariatric needs. BestCare® toilets come with standard gray toilet seat (white seat is an available option).

TOP SUPPLY



- Top supply
- Gray standard seat
- Standard and ADA height
- Pair with optional flush valve with sloped cover



WALL SUPPLY



- Wall supply
- Gray standard seat
- Standard and ADA height
- Pair with optional recessed flush valve with access panel and pushbutton



TANK STYLE



- Tank style toilet with secured inner workings
- Utilizes 1/2" NPT supply line and floor waste connection
- Gray standard seat
- Standard and ADA height



WEIGHT-BEARING & REPLACEMENT



- Bariatric weight 5,000 pound capacity
- Gray standard seat
- Standard and ADA height
- Can be modified to match existing rough-in



URINALS



- Minimizes ligature points
- High-Efficiency Urinal is designed to minimize ligature points
- Constructed of unbreakable stainless steel with a durable white Enviro-Glaze® powder coat
- Enclosed bottom panel provided to limit vandalism yet provide access for installation and servicing



LIGATURE-RESISTANT TOILET

Wider behind the bowl
reducing ligature points

Contoured for comfort,
with a warm residential
look and feel

Ligature-resistant toilet
seat is made of
impact-resistant ABS plastic

Constructed of unbreakable
stainless steel with a durable
white Enviro-Glaze® powder coat

Seat is bolted to
toilet to reduce
ligature points

- Toilets can be modified to replace existing wall hung toilet with carrier remaining in place to simplify renovation
- Grey toilet seat comes standard
- On-floor, top supply (-T) or wall supply (-W) versions available
- Wall or floor waste outlet available
- Available in standard (15") or ADA (18") height
- Highest test-weight capacity for toilet is 5,000 lbs



WALL SUPPLY



TOP SUPPLY



ADA COMPLIANT



AFFORDABLE



QUICK INSTALLATION



EASY MAINTENANCE



UNIVERSAL DESIGN

SAFETY

STYLE

WEIGHT BEARING

SPACE SAVING

PATIENT EXPERIENCE

GREAT FOR RETROFIT



TANK STYLE TOILET

- Tank style toilet with secured inner workings
- Wide toilet bowl minimizes ligature points
- Constructed from durable stainless steel with white Enviro-Glaze® powder coat

STOP DANGEROUS BREAKAGE WITH STAINLESS STEEL



Porcelain toilets can be broken, creating ligature points, sharp edges, and potentially lethal weapons. All BestCare® toilets are made out of stainless steel. BestCare® toilets provide the safety of stainless steel and are powder coated white to mitigate the institutional look of stainless steel that is commonly associated with correctional facilities (Non-powder coated stainless steel toilets are also available when requested).

WHY
STAINLESS STEEL?

OUR PRODUCT CAN WORK WITH EXISTING
WALLS AND MATCH ROUGH-INS

ONE SIZE FITS ALL

TOILET ACCESSORIES



Great solutions for Retrofit

Tank-style toilet, shown with access panel and
recessed toilet paper dispenser

DURABLE
SLEEK DESIGN
EASE OF USE

Our Ligature-Resistant toilet accessories are designed for patient comfort while keeping the patient's safety in mind. Ease of use and installation make this great for retrofit.

SENSOR OPERATED VALVE ACTIVATION



- Sensor activated top supply flush valve with a ligature-resistant housing
- Designed with vandal-resistant hardware
- Hands-free which aides in infection prevention
- Ideal for retrofit or new construction

FLUSH VALVE COVER



- Designed to work with Whitehall top supply toilets
- ADA Accessible version offers left or right hand orientation
- For retrofit or new construction
- Choice of 1.6 or 1.28 gallons per flush



TOILET SEATS



- Made to reduce the stigma of seat-less toilets
- Contoured for comfort, with a warm residential look and feel
- Ligature-resistant toilet seat is made of impact-resistant ABS plastic
- Seat is bolted to toilet to reduce ligature points
- Seats will only fit BestCare® toilets

RECESSED SUPPLY & ACCESS DOORS



- Access Panel provides entry to in-wall plumbing and electric
- Recessed flush valve includes access panel with push button for activation

GRAB BARS



- Easy to grasp with hand
- Stainless steel
- Available in Enviro-Glaze® powder coat
- Variety of lengths available from 18" to 48"



TOILET PAPER DISPENSER



- Fits typical size toilet paper roll
- No spindles
- Surface mounted or recessed

TOILET & URINAL ACCESSORIES

RETROFIT FLUSH VALVE COVER

Sloped housing

Conical
ligature-resistant
pushbutton

Vandal-resistant screws

EASY INSTALLATION

CONVERT EXISTING LEVER
HANDLED FLUSH VALVE INTO
LIGATURE-RESISTANT

Existing lever handled
flush valve



WATCH our video demo
on flush valve covers

<https://bit.ly/3eNmeR4>



* Toilet not included.



ADA RETROFIT FLUSH VALVE COVER

- Designed to work with Whitehall top supply toilets
- ADA Accessible version offers left or right hand orientation
- For retrofit of new construction
- Choice of 1.6 or 1.28 gallons per flush



ADA COMPLIANT



AFFORDABLE



QUICK INSTALLATION



EASY MAINTENANCE



UNIVERSAL DESIGN



PATIENT EXPERIENCE

SAFETY

STYLE

GREAT FOR RETROFIT



WATCH our video demo
How to install a toilet seat

<https://youtu.be/WaqjvVc9ISo>

TOILET SEATS

Standard gray seat provides contrast for easy sight

Seat is bolted to toilet to reduce ligature points

Contoured for comfort, with a warm residential look and feel

Ligature-resistant toilet seat is made of impact-resistant ABS plastic

Traditional toilet seats are mounted to the toilet bowl via hinges, which are dangerous ligature points. BestCare® toilet seats are mounted directly to the toilet bowl without brackets. BestCare® toilet seats can be removed for simple cleaning, and feature sloped edges, no lid and a curved seat.

FLUSH VALVE COVER AND SENSOR OPERATED FLUSH VALVE ACTIVATION

Sloped edges

Sensor

Electrical override button

Sloped edges

Vandal resistant screws

16 gauge stainless steel construction, white Enviro-Glaze® powder coat

MODEL WH2802SLPT-SO:
Includes flush valve with cover and sensor operated flush activation panel

* Recommended for toilets with top supply. Toilet not included.



ELECTRONIC WATER MANAGEMENT SYSTEM

FOR FAUCETS, SHOWERS, AND TOILETS

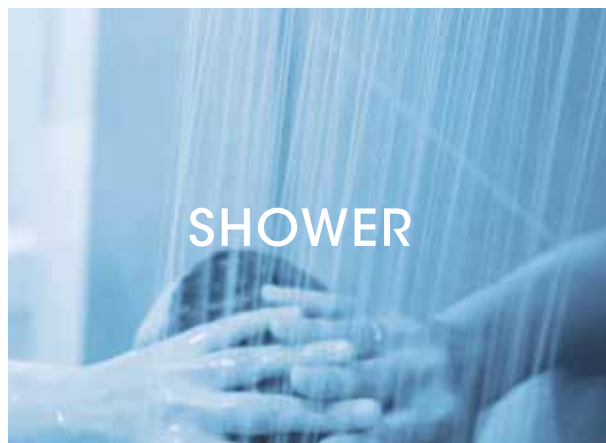
Oversee and regulate water usage at the building or fixture level using our three-part system. Control usage to conserve water, money, and resources. Suitable for new construction or retrofit.

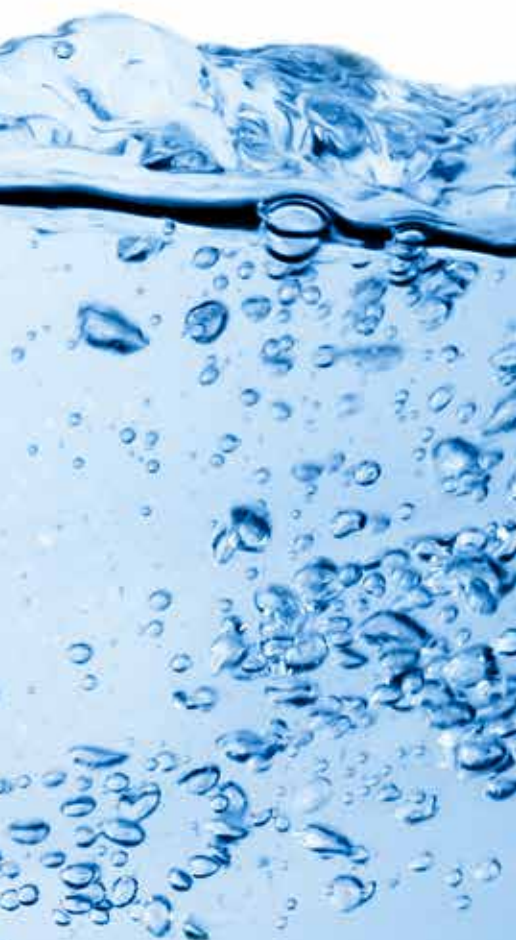


Master-Trol® electronic valve control systems utilize electronic valves to precisely monitor and regulate the building's water supply at the fixture level.

Flood-Trol® unique anti-flood system prevents toilets from overflowing by shutting off the water supply from the flush valve, resetting when the waste line has been cleared.

Time-Trol® Controller limits water usage by setting limits on flush valve run time and incorporating an adjustable timed lock out feature.





Whitehall Manufacturing announced that as of December 2018, Whitehall's BestCare WH2142 series toilets have been independently tested and certified to meet WaterSense standards! With the WaterSense label, these toilets are certified to use at least 20 percent less water, ultimately saving precious resources for future generations.



WH2142 SERIES TOILETS



LIGATURE-RESISTANT SHOWERS

STYLE
SAFETY
EASE OF USE



Ceiling Shower
Wall Mounted Shower
(ADA or Not ADA)
Tempering Mixing Valve



Conventional showers feature an array of hazardous ligature points. BestCare® shower solutions include conical shower heads, ADA compliant ligature-resistant tri-lever handles, seamless panel covers and ligature-resistant shower drains.



SURFACE MOUNT AND RECESSED



- Conical design prevents ligature-related injuries
- Single and dual shower heads available
- Temperature and pressure balancing mixing valve
- Surface-mounted for easy retrofit



HAND HELD



- Comes complete as a package with ligature-resistant collapsible handheld shower mounting bracket and adapter base
- Solid brass and stainless steel construction with white Enviro-Glaze® powder coat, stainless steel and polished chrome plated finishes



SHOWER HEADS & TUB SPOUTS



- Ligature-Resistant shower head
- Ligature-Resistant tub spouts available



DIVERTERS



- Ligature-Resistant shower diverter valve to redirect flow of water from high and low positioned shower heads, between the shower head and tub spout or between shower head and hand shower
- The handle and trim matches the WHSV16 shower valve



VALVES



- Non-rising stem prevents the handle from protruding further from the wall when opened
- Temperature and Pressure balancing ASSE 1016 Certified



CEILING SHOWER HEADS



- Ligature-Resistant and Vandal-Resistant ceiling mounted showerhead combines patient safety & function
- Heavy-duty stainless-steel construction polished to a sleek, mirror finish
- Includes a factory provided O-ring adapter with vandal resistant fastener
- Spray pattern is a non-adjustable multi-stream style with a 1.5 GPM flow rate

LIGATURE-RESISTANT SHOWERS

CEILING SHOWER



- Ligature-Resistant and Vandal-Resistant ceiling mounted showerhead combines patient safety & function
- Spray pattern is a non-adjustable multi-stream style with a 1.5 GPM flow rate

HANDHELD SHOWER

- 1.5 GPM handheld shower with on/off pushbutton
- Comes complete as a package with ligature-resistant collapsible handheld shower mounting bracket and adapter base
- Solid brass and stainless steel construction with white Enviro-Glaze® powder coat, stainless steel and polished chrome plated finishes



Flex shower hose

Must be used with supervision (the wand needs to be secured in a safe place when not in use with the patient)



Vacuum breaker

Quick connect shower assembly

Sloping feature when not in use, does not have ligature points

Collapsible hand shower mounting bracket, therefore does not have a ligature point

Handheld shower head



DESIGNED FOR QUICK ATTACHMENT & EASY REMOVAL



- * Optional access box available for containment of hose when not in use. This product is designed for use with supervision. Place hose shower head in a safe and secure location when not in use.



ADA COMPLIANT



AFFORDABLE



QUICK INSTALLATION



EASY MAINTENANCE



UNIVERSAL DESIGN

SAFETY

STYLE

DURABLE

ADA SURFACE MOUNT SHOWER

Sloping feature does not have ligature points

Conical spout showerhead

Stainless steel, white Enviro-Glaze® powder coat



Second conical spout showerhead



Can be turned on with elbow



- Non-rising stem, eliminates ligature points
- Easy to turn

LIGATURE-RESISTANT SHOWERS BASES WITH INTEGRAL LINEAR DRAIN



Corterra® shower base with integral ligature-resistant trench drain, shown with grab bars and coordinating sink



Close up of trench drain

STYLE

SAFETY

COMPLETE
SYSTEM

HELPS PREVENT

SLIP HAZARDS

Complete your BestCare® by Whitehall bathroom with a Corterra® solid surface non-slip shower base. Various sizes and configurations are available, and are designed with an integral trench drain. Shower bases can be customized to match other solid surface products such as sinks and mirrors. In addition, for retrofit applications custom sizes can be made. Contact Whitehall for your retrofit projects.

SHOWER BASE



- Multiple sizes and configurations available
- Non-slip matte finish
- Match shower bases with sinks and mirrors, see Corterra® solid surface color options

ADA SHOWER BASE

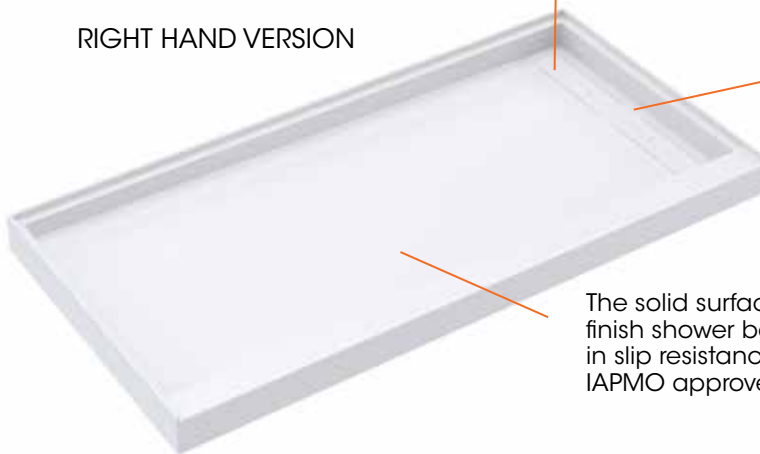


- Multiple sizes and configurations available
- Non-slip matte finish
- Match shower bases with sinks and mirrors, see Corterra® solid surface color options
- Ideal for retrofit projects



Shower base comes in standard Corterra® Blanco. Match mirror and sink counter color. See more on Corterra® solid surface color options, page 77.

RIGHT HAND VERSION



Linear drain is stainless steel with a white Enviro-Glaze® powder coat

Drain has sloped sides to keep water from pooling at the top, reducing growth of harmful bacteria

The solid surface matte finish shower base aids in slip resistance and is IAPMO approved

The solid surface matte finish shower base aids in slip resistance and is IAPMO approved

ADA LEFT HAND VERSION



Linear drain is stainless steel with a white Enviro-Glaze® powder coat

No threshold

Drain has sloped sides to keep water from pooling at the top, reducing growth of harmful bacteria

LIGATURE-RESISTANT DRAINS



Linear drain shown with grab bars and coordinating sink

DESIGNED WITH AN
INTERNAL GUSSET
SYSTEM TO MINIMIZE
LIGATURE POINTS

DESIGNED TO HELP
PREVENT CLOGGING

AVAILABLE IN A
VARIETY OF STYLES



Traditional drains possess unexpected ligature points, as patients have been known to attach ligatures to drain grates to attempt self-harm. BestCare® shower and floor drains minimize ligature points while also helping to prevent intentional clogging.

FLOOR SQUARE



- Fabricated with a standard satin finish
- Solid cast nickel bronze construction
- 5" and 6" square available

FLOOR ROUND



- Fabricated with a standard satin finish
- Solid cast nickel bronze construction
- 5" and 6" diameter available

VINYL FLOOR



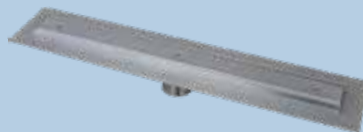
- The round top grate head is designed for clamping vinyl flooring or other waterproof material at the finished floor level
- Solid cast nickel bronze construction

DRAIN GRATES



- Grate only
- Fabricated with a standard satin finish
- Solid cast nickel bronze construction
- Available in round & square, 5" and 6" diameter
- Grates available for easy retrofit and can fit many drains already installed in the floor

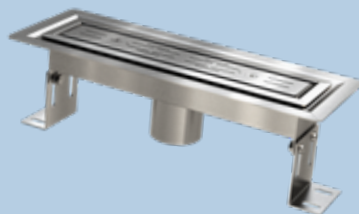
LINEAR TRENCH DRAINS



- Designed with a drain cover without perforations to prevent ligature points
- A hidden shield under the drain cover also prevents ligature points
- Can be used as a threshold for showers thus making them ADA compliant



VINYL LINEAR TRENCH DRAINS



- Designed specifically for Vinyl Flooring or similar water-resistant materials
- Drain grate has elongated 1/16" wide drain slots to increase ligature resistance
- Drain system incorporates a clamping collar to mechanically clamp the Vinyl in place to provide water resistant seal
- Drain body is made of stainless steel and includes adjustable height legs to assist with installation

LIGATURE-RESISTANT DRAINS

VINYL FLOOR DRAIN

GREAT SOLUTION
FOR HIGH FOOT TRAFFIC

BATHROOMS

KITCHENS

- Ligature-resistant floor drain is designed with an internal gusset system in the grate assembly that helps prevent ligature points
- The round top grate head is designed for clamping vinyl flooring or other waterproof material at the finish floor level
- Reversible 4" flashing collar permits adjustment of grate to meet finished floor level



WATCH our video demo
on our vinyl floor drains

<https://bit.ly/3jUg6th>



DESIGNED FOR CLAMPING
VINYL FLOORING AT
THE FINISH FLOOR LEVEL.



ADA COMPLIANT



AFFORDABLE



QUICK INSTALLATION



EASY MAINTENANCE



UNIVERSAL DESIGN



HELPS PREVENT

CLOGGING

SAFETY

STYLE

LINEAR DRAINS

LINEAR TRENCH AND FLOOR DRAINS



Vinyl Floor Linear Trench Drain



Linear Floor Drain



Drain grate

Clamping collar

Drain body

- Vandal-Resistant
- BestCare® linear drains are designed with a drain cover without perforations and a hidden shield under the drain cover which prevents ligature points
- Linear drains are ideal for applications where ADA accessibility is a must
- Linear Trench Drain option available for vinyl flooring where drain system incorporates a clamping collar to mechanically clamp the Vinyl in place to provide water resistant seal
- Simple design and durable construction ensure a clog-resistant alternative to traditional shower drains, helping to maintain a clean and healthy behavioral healthcare environment

Whitehall provides retrofit grates for applications with existing drains. For new construction, we can provide Jay R. Smith Mfg. Co.® drains with entire new assembly.



LIGATURE-RESISTANT BOTTLE & CUP FILLERS



Pushbutton semi-recessed bottle filler in white Enviro-Glaze® powder coat



EASY INSTALLATION
AND MAINTENANCE
QUICK FILL RATE
ADA COMPLIANT



SENSOR



- Fabricated from vandal and ligature-resistant stainless steel
- Can be mounted in a 4" or larger wall space
- Remote chiller optional



PUSHBUTTON



- Pneumatic ligature-resistant pushbutton
- Fabricated from vandal and ligature-resistant stainless steel
- Can be mounted in a 4" or larger wall space
- Remote chiller optional



BESTCARE® LIGATURE-RESISTANT DRINKING FOUNTAIN / BOTTLE FILLER



- 18 gauge stainless steel
- Quick fill rate allows users to fill water bottles quickly
- Key latch opens adjacent hinge door for simple filter replacement and maintenance
- Widely available non-proprietary filter
- Laminar flow eliminates splash
- Satin finish stainless steel with white Enviro-Glaze® powder coat
- Easy installation and maintenance
- Optional chiller



LIGATURE-RESISTANT DIVISION 10



Complete the patient bathroom with a selection of complementary accessories*

**TAMPER-RESISTANT
STAINLESS STEEL
SOLID SURFACE
DURABLE**



The BestCare® ligature-resistant line features a wide array of restroom accessories including mirrors, toilet paper and paper towel holders, soap dishes, shelves as well as ADA accessible grab bars with ligature-resistant closure plates.

NOTE: Not all products shown are available.

* Photos are from a showroom, not a real installation

DIGNITY SUITE® MIRROR WITH SHELVING



- Frame and shelves are constructed of Corterra® solid surface material
- Shelf compartments are oversized for storage of short and tall items
- Reflective surface is stainless steel with a high polish mirror finish
- Shelf backing has a Snow White powder coat
- Unique, concealed mounting system

MIRRORS STAINLESS STEEL AND SOLID SURFACE MOUNT



Stainless Steel



Solid
Surface Mount

STAINLESS STEEL

- Frame has Enviro-Glaze® white powder coating
- Front mounted stainless steel with mirror finish
- Countersunk screw holes with tamper-resistant screws

SOLID SURFACE MOUNT

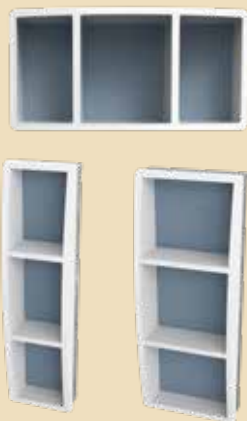
- Frame is constructed of Corterra® recycled solid surface polymer, standard color is Blanco (White)
- Reflective surface is type 400 stainless steel polished to a mirror finish
- Designed with rounded corners, making it great for ligature-resistant applications

TOILET PAPER HOLDERS



- Fits typical size toilet paper
- No spindles
- Surface mounted & recessed

DIGNITY SUITE® SHELVES



- Available in 10" or 15" widths
- Outer Frame, interior sides, and shelves are constructed of Corterra® solid surface material
- Oversize shelf compartments store short and tall items
- Back Panel is heavy gauge stainless steel with Dignity Blue powder coat.
- Can be used in wet environments
- Concealed mounting system improves security and provides a less institutional look.
- Can be mounted either vertically (shown) or horizontally.

TOWEL HOOKS



- Hook and body are constructed of injection molded ABS plastic
- Hook will release and swing down with loads more than 11 lbs
- Incorporates a Torsion spring-loaded hook that retracts into an upright position when not in use
- Can be mounted behind a door
- Fully adjustable
- ADA compliant when mounted at required height and accessible position. Compliance is subject to local code enforcement authority



GRAB BARS



- Stainless steel
- Available in Enviro-Glaze® powder coat
- Variety of lengths available from 18" to 48"



SHOWER CADDY



- The sloping top makes this item ideal for ligature-resistant applications
- The open shelf design is easily inspected, preventing the concealment of contraband

SOAP DISHES



- The die formed soap dish has raised dimples to provide air circulation around the soap bar, keeping it dry
- 16 gauge stainless steel construction
- Available in Enviro-Glaze® powder coat
- Tamper-resistant
- Recessed-mounted

VANITY SHELVES



- The sloping top makes this item ideal for ligature-resistant applications
- The open shelf design is easily inspected, preventing the concealment of contraband
- The two-shelf design allows storage for short and tall items

SHELVES RECESSED



- Ligature-resistant stainless steel recessed shelving unit
- 16 gauge stainless steel construction
- Designed tall and deep enough to hold typical bathroom items
- 14" shelf available for stud wall constructed facilities, fits between studs that are 16" center

SHELVES SURFACE MOUNT



- Designed with sloped bookends and base to reduce ligature points
- 14 gauge stainless steel construction



ADA COMPLIANT



AFFORDABLE



QUICK INSTALLATION



EASY MAINTENANCE



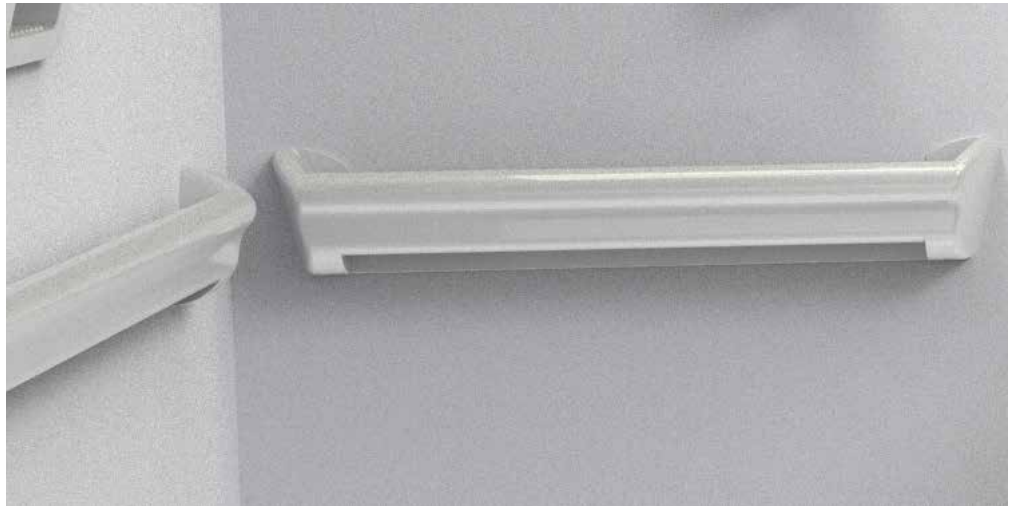
UNIVERSAL DESIGN

PATIENT EXPERIENCE

DURABLE

ROUNDED CORNERS/
SLOPED EDGES

GRAB BARS



- Shape design is easy to grasp
- Softer edges, less institutional
- The bottom slopes in and has 3/16" weep holes for water drainage
- Stainless steel
- Available in Enviro-Glaze® powder coat
- Variety of lengths available from 18" to 48"



LIGATURE-RESISTANT ACCESSORIES

MIRRORS

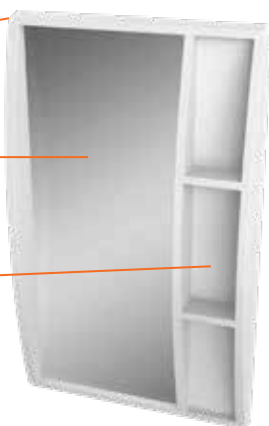
Rounded corners and sloped edges for added safety

Polished stainless steel for reflection (will not break or shatter)

Customizable shelf backing

Snow White (EG-10)

Dignity Blue (EG-30) and Mirror-finish



- Corterra® Solid surface construction to provide strength while eliminating sharp corners
- Reflective surface is shatter-proof and is made of stainless steel with a high polish mirror finish
- * Can be mounted either horizontally or vertically. Suitable for wet environments
- Shelf backing can be customized to a Blue Powder-Coat & White Powder-Coat finishes, or Mirror finish
- Oversized height shelf compartments allow storage of both short and tall items
- Concealed mounting system to eliminate visible fasteners, improve security & provide a less institutionalized look

SOLID SURFACE

CLEAN SLEEK DESIGN • NO VISIBLE HARDWARE

FULL BODY REFLECTION • CUSTOM & LARGER SIZES AVAILABLE

Rounded corners and sloped edges

Polished stainless steel for reflection (will not break or shatter)



Concealed hardware with mounting disks and set screw to secure mirror in place



- Mirror features rounded corners and concealed hardware, making this perfect for ligature-resistant applications
- The exposed frame is fabricated Corterra® solid surface polymer, standard frame color is blanco (white)
- 400-series stainless steel is polished to a mirror finish for reflection
- Mirror is provided with concealed mounting disks, to be used with installer provided fasteners appropriate to wall construction



Match mirror and sink counter color, see Corterra® solid surface color options on page 77.

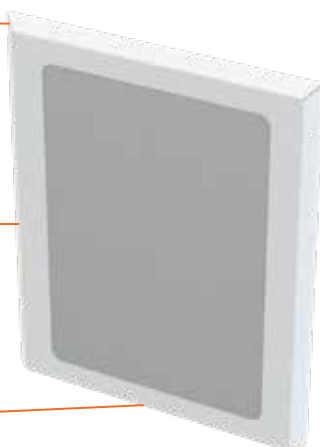
STAINLESS STEEL

Sloped edges

Polished stainless steel for reflection (will not break or shatter)



Concealed hardware with mounting disks and set screw to secure mirror in place



- Mirror features sloped edges and concealed hardware, making this perfect for ligature-resistant applications
- 400-series stainless steel is polished to a mirror finish for reflection
- The exposed frame is powder coated white type 304 stainless steel
- Mirror is provided with concealed mounting disks, to be used with installer provided fasteners appropriate to wall construction



WATCH our video demo on how to install:
<https://youtu.be/I4L6kNKnO2Q>



ADA COMPLIANT



AFFORDABLE



QUICK INSTALLATION



EASY MAINTENANCE

UNIVERSAL DESIGN

It sounds insignificant, but how much do you spend annually on replacement spindles?



EASY REPLACEMENTS

WITH OUR SPINDLE-LESS
TOILET PAPER HOLDERS



WHD-TP



MODEL NO.
WH1845B

DIGNITY SUITE SHELVES



Outer Frame, interior sides, and shelves are constructed of Corterra® solid surface material

Lock shelving into place with the magnetic locking mechanism



Oversize shelf compartments store short and tall items

Back Panel is heavy gauge stainless steel with Dignity Blue powder coat.

-  Snow White (EG-10)
-  Dignity Blue (EG-30) and Mirror-finish

DURABILITY
DEMO



WATCH our video demo on the durability of our accessories

<https://bit.ly/39L7cd0>

LIGATURE-RESISTANT CABINETS & ENCLOSURES

ACCESS DOORS



Access doors are attached with a continuous hinge and feature sloped edges to minimize ligature points

- BestCare® ligature-resistant access doors provide access to behind-the-wall components such as water valves and electrical lines
- Fabricated with stainless steel
- Dual lock to prevent prying door corners open



FIRE EXTINGUISHER CABINETS

NEW AND IMPROVED DESIGN!



We've updated the design of our cabinets to fully align with our desire to provide the safest, most ligature-resistant product on the market.

- Fully impenetrable to unauthorized access
- Strongly sloping beveled edges are highly resistant to ligature attachment
- Premium design crafted from 20-gauge stainless steel with a continuous hinge
- Lockable with cylinder lock; can be keyed to match other locks in facility
- Fire extinguisher not included.



ACCESS DOORS



- Provide access to behind-the-wall components such as water valves and electrical lines
- Attached with a continuous hinge
- Features sloped edges to minimize ligature points
- Fabricated from stainless steel
- Dual locks to prevent prying open doors.

RECESSED FIRE EXTINGUISHER CABINET



- 20 gauge steel box and door
- Sloping surfaces for safety
- Standard cylinder lock, or keyed to match other locks in facility
- White Enviro-Glaze® powder coat
- New improved design

SEMI-RECESSED FIRE EXTINGUISHER CABINET



- 20 gauge steel box and door.
- Sloping surfaces for safety.
- Standard cylinder lock, or keyed to match other locks in facility
- White Enviro-Glaze® powder coat
- New improved design

SURFACE MOUNT FIRE EXTINGUISHER CABINET



- 20 gauge steel box and door
- Sloping surfaces for safety
- Standard cylinder lock, or keyed to match other locks in facility
- White Enviro-Glaze® powder coat
- New improved design

MANUFACTURER OF HEALTHCARE PLUMBING PRODUCTS

ENGINEERING & EXPERIENCE



BEHAVIORAL HEALTHCARE -
LIGATURE-RESISTANT PRODUCTS

BARIATRIC SINKS & TOILETS

INFECTION PREVENTION SINKS

SEAMLESS SINKS & COUNTERS

SCRUB SINKS

PATIENT CARE UNITS
COMBINATION TOILET & SINK

DIALYSIS BOXES

REHABILITATION/WHIRLPOOL

Our parent company, Whitehall Manufacturing® is a North American manufacturer that serves the healthcare and rehabilitation markets with nearly 75 years in the market. Our products are manufactured from high-quality, durable materials that work reliably year after year.





HISTORY IN THE INDUSTRY

Founded in 1946, Whitehall Manufacturing celebrates over 70 years in the healthcare plumbing industry.



ON SITE FACILITY TRAINING

We work with each individual application to ensure professional on-site design, training and start up.



DESIGN CONSULTATION & SUPPORT

We personally guarantee the perfect fixture every time, from initial design to follow-up support



QUALITY CRAFTSMANSHIP

Whitehall fixtures are constructed with only the highest-grade materials, from stainless steel to solid surface polymer.



DEDICATED CUSTOMER SERVICE

Our trained, tried and true representatives are devoted to providing only the highest quality customer service.

Whitehall Manufacturing was founded in New Jersey in 1946. It was a key manufacturer of whirlpools designed to treat injured soldiers after World War II. Since then, Whitehall has attained and established a myriad of healthcare and rehabilitation lines. Introduced in 2013, our BestCare® ligature-resistant fixtures minimize ligature points to reduce risk and enhance patient well being in behavioral healthcare facilities.

PLUMBING/CODE EXPERTS

- Design to ADA standards 
- Design to bariatric requirements 
- Design for behavioral healthcare
- Universal Design
- Design to individual state requirements
- International expertise, with offices in Canada, Mexico, the UK and Dubai
- Domestic and International codes - CSA, UL, FDA approvals



OUR OTHER COMPANIES - ALL ABOUT WATER

Learn more on the following pages about vacuum plumbing, water management and tempered water control.



ACORNVAC VACUUM PLUMBING



Healthcare plumbing designed for today... Flexible for tomorrow

Is your physical space or plumbing holding you back from implementing new models of care?

AcornVac® Vacuum Plumbing Systems create a new paradigm where real flexibility in use of space is possible, and making changes in existing facilities or repurposing commercial or retail space for healthcare use is feasible.....without disruption!



Water supply and now waste piping can be routed to the ceiling above.

SELF CONTAINED – waste piping is contained in wall cavities and the ceiling above, eliminating issues with waste pipe routing.

RECONFIGURABLE – any fixture can be easily relocated without disruption.

CLOSED SYSTEM – completely closed waste piping network under constant negative pressure is quiet and leak-free.

NO INTERRUPTION – when renovating upper floors, there is little to no interruption to the floor below.

ENHANCED CONTROL – over fixture use and building waste. the floor below.

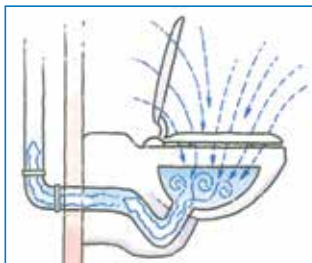
ENHANCE
INFECTION PREVENTION

ELIMINATE
CONSTRUCTION INTERRUPTIONS

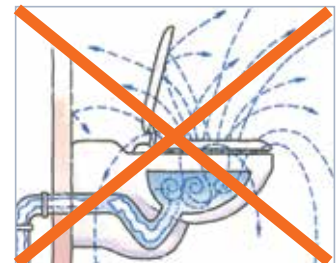
CONTROL
FACILITY WATER & WASTE



VACUUM PLUMBING PREVENTS
INFECTION AND ELIMINATES
UNSANITARY FLUSH PLUME.



ACORNVAC
PLUMBING



GRAVITY FLUSH
WITH PLUME

CONTROLS® WATER REGULATING PRODUCTS



Reduce your facilities' water usage while adding safety regulation

- Full range of mixing valves for single or multiple fixtures and any flow rate
- Fully IAPMO Certified to meet ASSE Standards
- Manufactured, assembled and tested in-house
- Allows higher temperature water in supply lines, tempered for user safety at point of use, to help control Legionella
- Lead-free



DELIVER SAFE
TEMPERED WATER
PATIENT SAFETY
PREVENT SCALDING
LEAD FREE
WATER SAVING



ConTrols® water regulating products include pressure reducing valves, thermostatic control valves, whole-building mixing and monitoring systems, and more. Digital options allow for remote regulation, monitoring, and reporting across the whole building. The unique redundancies built into ConTrols systems assure safe water temperature even in the event of power, system, or other failure.

MATERIAL INFORMATION

ADD TO SOLID SURFACE FOR INFECTION CONTROL

SteriTouch®
ANTIMICROBIAL PROTECTION

How Silver Ion Technology Works



Add SteriTouch to any solid surface Corterra® sink and reduce the growth of harmful bacteria and mold

How does SteriTouch work?

- A permanent antimicrobial additive is embedded into the solid surface material of the sink to discourage odorous bacteria, by use of silver ion technology
- Silver ions embedded in the material substrate are released via ambient moisture and enter the cell membrane
- Silver ions destabilize cell membrane, stop respiration and inhibit cell division, whilst blocking the replica.

SteriTouch® and SteriTouch® logo are registered trademarks of SteriTouch Limited

ADD TO STAINLESS STEEL FOR INFECTION CONTROL

SURESHIELD
COATINGS COMPANY



Contains antimicrobial protection to inhibit the growth of odor and stain-causing bacteria, molds, mildews, and fungi on the treated surface.

- For healthcare applications, stainless steel can be manufactured with a Sureshield Anti-Microbial coating
- Sureshield can be applied directly on stainless steel or to Enviro-glaze powder coat

How does Sureshield work?

- Contains antimicrobial protection to inhibit the growth of odor and stain-causing bacteria, molds, mildews, and fungi on the treated surface
- Tests show after 24 hours, the number of living microorganisms on the Sureshield coated metal are immeasurable by standard lab equipment

MATERIAL INFORMATION

ENVIRO-GLAZE®



Enviro-Glaze is a smooth or textured hard coating that endures impact, will not bubble, and is chip-resistant. The coating is an electrostatically sprayed powder that is applied to the outside of the stainless steel fixture, then cured at a temperature in excess of 400°F. Vigorous inspection during every step of the production process ensures that the finish on every fixture meets Whitehall Manufacturing's high quality standards.

The optional Enviro-Glaze® color coating enhances stainless steel fixtures by offering designer colors without compromising safety or sanitation.

The smooth, hard, impact-resistant coating is easy to clean and is corrosion-resistant.

CORTERRA® SOLID SURFACE

CORTERRA® COLORS

-  1. Blanco (Gloss)
-  2. Blanco (Matte)
-  3. Cotton Tail
-  4. Parchment
-  5. Meteorite
-  6. Moonstone Metallic
-  7. Pacific Palisades
-  8. Del Mar
-  9. Saguaro



Corterra color chip sample boxes will be available in Spring 2023. Contact your local rep for more details.

SHOWROOMS

MAKE AN APPOINTMENT TO VISIT OUR CITY OF INDUSTRY SHOWROOM
or SCHEDULE AN APPOINTMENT WITH
WHITEHALL/ACORNVAC HEALTHCARE MOBILE SHOWROOM



EDUCATION & WEBINARS

Contact us for more information: info@whitehallmfg.com



WEBINARS:

- Behavioral Healthcare Design
- Healthcare Plumbing Products
- Infection Prevention



WHITEHALL CEU COURSES:

- Advances in Plumbing Healthcare Design
- Ligature-Resistant Solutions for Behavioral Healthcare Facilities
- Wash Your Hands One More Time
- Designing for Wet Environments



WATCH OUR DEMO VIDEOS

- BestCare® Ligature-Resistant FAUCETS: <https://bit.ly/30bJnI4>
- BestCare® Ligature-Resistant DRAINS: <https://bit.ly/3jUg6th>
- BestCare® FLUSH VALVE COVER: <https://bit.ly/3eNmeR4>
- BestCare® TOILETS: <https://youtu.be/WaqjvVc9ISo>
- BestCare® Ligature-Resistant MIRRORS: <http://bit.ly/3KTkybw>
- BestCare® Ligature-Resistant DURABILITY: <https://bit.ly/39L7cd0>

SOCIAL MEDIA & CONTACT INFO



FOLLOW US

Instagram: <https://www.instagram.com/whitehallmfg/>

Twitter: <https://twitter.com/WhitehallMfg>

LinkedIn: <https://www.linkedin.com/company/whitehall-manufacturing/>

Facebook: <https://www.facebook.com/whitehallmfg/>

Youtube: <https://www.youtube.com/user/whitehallmfg>



CONTACT:

CUSTOMER SERVICE: 1-800-782-7706

E-MAIL: info@whitehallmfg.com

BREATHE



WE'RE HERE FOR YOU
LET'S WORK TOGETHER

CITATIONS

1. Centers for Disease Control and Prevention, and Data & Statistics Fatal Injury Report for 2015. "Suicide Statistics." American Foundation for Suicide Prevention, American Foundation for Suicide Prevention, 2017, afsp.org/about-suicide/suicide-statistics/. Accessed 2 Mar. 2017.
2. Centers for Disease Control and Prevention, and National Center for Injury Prevention and Control. "Web-Based Injury Statistics Query and Reporting System (WISQARS)." Centers for Disease Control and Prevention, Centers for Disease Control and Prevention, 12 Jan. 2017, www.cdc.gov/injury/wisqars/index.html. Accessed 6 Mar. 2017.
3. The Joint Commission. "Environment of Care." Standards for Behavioral Health Care 2017, ser. 2017, Joint Commission On, Oak Brook, 2017, pp. EC1-EC28. 2017.
4. The Joint Commission. "Sentinel Event Data Root Causes by Event Type 2004 - 2014." The Joint Commission, 2015.
5. Knoll, James L. "Inpatient Suicide: Identifying Vulnerability in the Hospital Setting." Psychiatric Times, Psychiatric Times, 22 May 2012, www.psychiatrictimes.com/suicide/inpatient-suicide-identifying-vulnerability-hospital-setting. Accessed 2 Mar. 2017.
6. Mills, Peter D., et al. "Inpatient Suicide on Mental Health Units in Veterans Affairs (VA) Hospitals: Avoiding Environmental Hazards." General Hospital Psychiatry, Elsevier Inc., 22 May 2013, [www.ghpjournal.com/article/S0163-8343\(2013\)2900102-3/abstract](https://www.ghpjournal.com/article/S0163-8343(2013)2900102-3/abstract). Accessed 2 Mar. 2017.
7. 2021 National Veteran Suicide Prevention ANNUAL REPORT, Office of Mental Health and Suicide Prevention September 2021 <https://www.mentalhealth.va.gov/docs/data-sheets/2021/2021-National-Veteran-Suicide-Prevention-Annual-Report-FINAL-9-8-21.pdf> www.thenationalcouncil.org/consulting-best-practices/national-council-shareables/. Accessed 6 Mar. 2017.
8. Warner, Jennifer. "Suicide, Not Car Crashes, #1 Cause of Injury Death." WebMD, WebMD, 20 Sept. 2012, www.webmd.com/mental-health/news/20120920/suicide-top-cause-of-injury-death. Accessed 2 Mar. 2017
9. <https://morrisgroup.box.com/s/y66pewugxv4sv27upo53luel7jtas5vj>
10. <https://www.mentalhealth.va.gov/docs/data-sheets/2022/2022-National-Veteran-Suicide-Prevention-Annual-Report-FINAL-508.pdf>
11. [https://www.ncbi.nlm.nih.gov/pmc/articles/PMC6245375/#:~:text=The%20US%20Center%20for%20Disease,17\)%20die%20due%20to%20these](https://www.ncbi.nlm.nih.gov/pmc/articles/PMC6245375/#:~:text=The%20US%20Center%20for%20Disease,17)%20die%20due%20to%20these).
12. Qualtrics, "The other COVID-19 crisis: Mental health" <https://www.qualtrics.com/blog/confronting-mental-health/> April 14, 2020
13. according to a viewpoint piece in JAMA Psychiatry
14. Joshua C. Morganstein, MD, said at the American Psychiatric Association (APA) Spring Highlights Meeting
15. <https://www.usatoday.com/story/news/nation/2022/07/08/suicide-prevention-lifeline-988-what-to-know/7830453001>
16. AHA, "TrendWatch: The Impacts of the COVID-19 Pandemic on Behavioral Health" <https://www.aha.org/guidesreports/2022-05-31-trendwatch-impacts-covid-19-pandemic-behavioral-health>

**75% of inpatient suicides occur in the
patient's bathroom, bedroom, or closet⁵**

Manufacturing Divisions

WATER CONTROLS



DRAINAGE



PLUMBING FIXTURES & ACCESS



FIRE PROTECTION



MANUFACTURING SUPPORT



Sales & Distribution



0623
L1001575



STREET ADDRESS
15125 PROCTOR AVENUE
CITY OF INDUSTRY, CA 91746

MAILING ADDRESS
P.O. BOX 3527
CITY OF INDUSTRY, CA 91744

PHONE: (626) 968-6681
E-MAIL: SALES@WHITEHALLMFG.COM