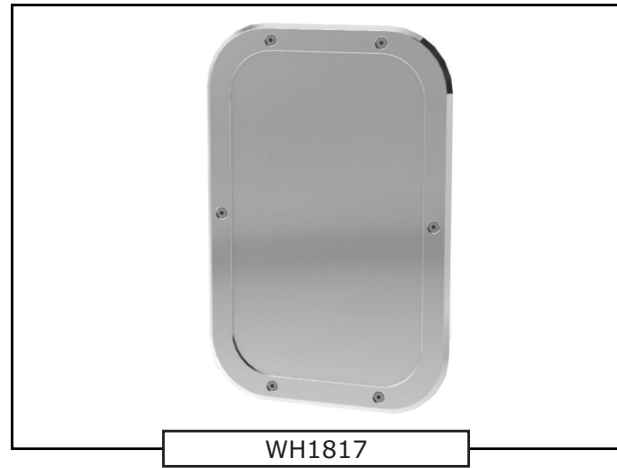




**Ligature Resistant Mirror, Rounded
 Corner**

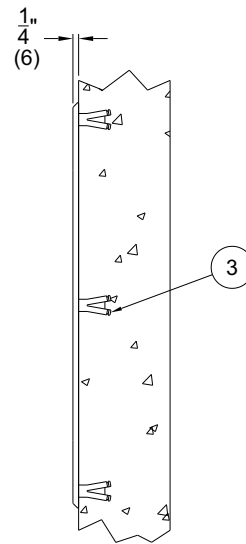
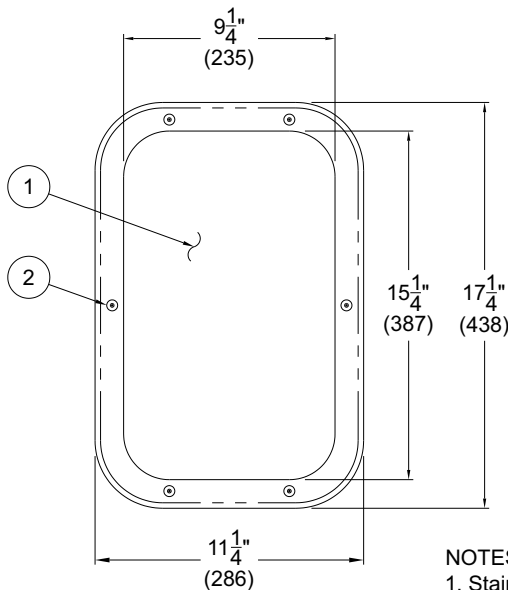
Mirror is designed for use in Ligature Resistant applications. Mirror and integral frame are die formed from a single sheet of high quality, type 400-series stainless steel polished to a mirror finish and is furnished with six tamper-resistant screws.



MODEL NUMBER AND OPTIONS SELECTION:

BASE MODEL NUMBER

- WH1817 Ligature Resistant Mirror



NOTES:

1. Stainless Steel Mirror
2. Tamper Resistant Screws
3. Wall Mounting Anchors (By Others)

DISCLAIMER:

This product is designed to decrease the probability that it may be utilized as an apparatus for ligature. It is not a replacement for professionals who are trained in the proper evaluation, management and supervision of persons at risk of suicide.

WARNING: Cancer and Reproductive Harm - www.P65Warnings.ca.gov



Member of
 U.S. Green
 Building
 Council



Recyclable
 Product

All dimensions are nominal and subject to manufacturer's change without notice. Whitehall assumes no responsibility for use of void or superseded data © Whitehall Manufacturing, Member of Morris Group International. Please visit www.whitehallmfg.com for most current specifications.

SELECTION SUMMARY & APPROVAL FOR MANUFACTURING

Model Number & Options _____ Quantity _____
 Company _____ Date _____
 Contact _____ Title _____
 Approval for Manufacturing/Signature _____